

**Anti-Calponin Antibody**  
**Catalog # ABO11534****Specification**

---

**Anti-Calponin Antibody - Product Information**

Application	WB, IHC-P
Primary Accession	<a href="#">P51911</a>
Host	Rabbit
Reactivity	Human, Mouse, Rat
Clonality	Polyclonal
Format	Lyophilized

**Description**

Rabbit IgG polyclonal antibody for Calponin-1(CNN1) detection. Tested with WB, IHC-P in Human;Mouse;Rat.

**Reconstitution**

Add 0.2ml of distilled water will yield a concentration of 500ug/ml.

**Anti-Calponin Antibody - Additional Information**

**Gene ID** 1264

**Other Names**

Calponin-1, Basic calponin, Calponin H1, smooth muscle, CNN1

**Calculated MW**

33170 MW KDa

**Application Details**

Immunohistochemistry(Paraffin-embedded Section), 0.5-1 µg/ml, Human, Mouse, Rat, By Heat<br>Western blot, 0.1-0.5 µg/ml, Human, Mouse, Rat<br>

**Tissue Specificity**

Smooth muscle, and tissues containing significant amounts of smooth muscle.

**Protein Name**

Calponin-1

**Contents**

Each vial contains 5mg BSA, 0.9mg NaCl, 0.2mg Na<sub>2</sub>HPO<sub>4</sub>, 0.05mg Thimerosal, 0.05mg NaN<sub>3</sub>.

**Immunogen**

A synthetic peptide corresponding to a sequence at the C-terminus of human Calponin(283-297aa EPAHNHHAHNYNSA), different from the related mouse and rat sequences by two amino acids.

**Purification**

Immunogen affinity purified.

**Cross Reactivity**

No cross reactivity with other proteins

Storage

**At -20°C for one year. After reconstitution, at 4°C for one month. It can also be aliquotted and stored frozen at -20°C for a longer time. Avoid repeated freezing and thawing.**

#### Sequence Similarities

Belongs to the calponin family.

### Anti-Calponin Antibody - Protein Information

**Name** CNN1

#### Function

Thin filament-associated protein that is implicated in the regulation and modulation of smooth muscle contraction. It is capable of binding to actin, calmodulin and tropomyosin. The interaction of calponin with actin inhibits the actomyosin Mg-ATPase activity (By similarity).

#### Tissue Location

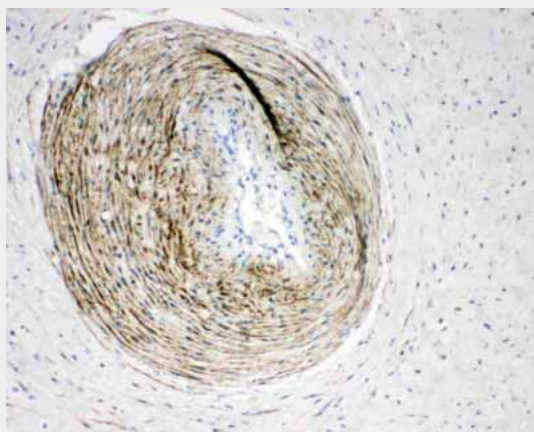
Smooth muscle, and tissues containing significant amounts of smooth muscle

### Anti-Calponin Antibody - Protocols

Provided below are standard protocols that you may find useful for product applications.

- [Western Blot](#)
- [Blocking Peptides](#)
- [Dot Blot](#)
- [Immunohistochemistry](#)
- [Immunofluorescence](#)
- [Immunoprecipitation](#)
- [Flow Cytometry](#)
- [Cell Culture](#)

### Anti-Calponin Antibody - Images



Anti-Calponin antibody, ABO11534, IHC(P)IHC(P): Human Placenta Tissue



Anti-Calponin antibody, ABO11534, Western blotting All lanes: Anti -Calponin (ABO11534) at 0.5ug/ml Lane 1: HELA Whole Cell Lysate at 40ug Lane 2: JURKAT Whole Cell Lysate at 40ug Lane 3: MCF-7 Whole Cell Lysate at 40ug Predicted bind size: 33KD Observed bind size: 33KD

#### **Anti-Calponin Antibody - Background**

Calponin is a basic 34-kD protein first isolated from chicken gizzard and bovine aorta. This gene is mapped to 19p13.2. It is specifically expressed in smooth muscle and binds calmodulin, actin, and tropomyosin. It is able to inhibit the ATPase activity of myosin and is thought to play a role in smooth muscle contraction. Calponin is a smooth muscle specific, actin-, tropomyosin- and calmodulin-binding protein thought to be involved in some way in the regulation or modulation of contraction.